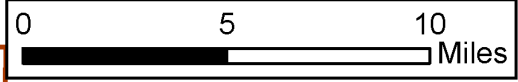
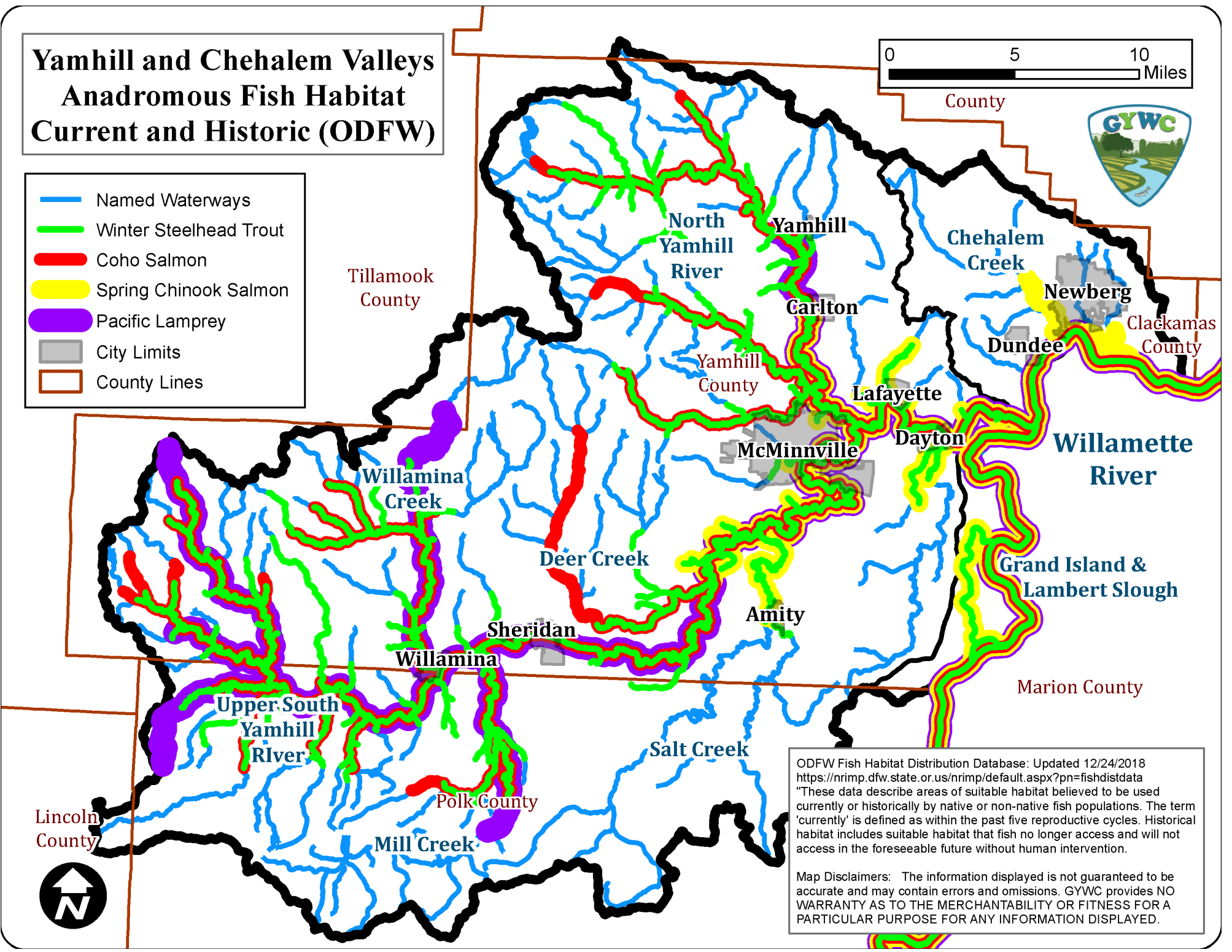


# Yamhill and Chehalem Valleys Anadromous Fish Habitat Current and Historic (ODFW)



- Named Waterways
- Winter Steelhead Trout
- Coho Salmon
- Spring Chinook Salmon
- Pacific Lamprey
- City Limits
- County Lines



ODFW Fish Habitat Distribution Database: Updated 12/24/2018  
<https://nrimp.dfw.state.or.us/nrimp/default.aspx?pn=fishdistdata>  
 "These data describe areas of suitable habitat believed to be used currently or historically by native or non-native fish populations. The term 'currently' is defined as within the past five reproductive cycles. Historical habitat includes suitable habitat that fish no longer access and will not access in the foreseeable future without human intervention.

Map Disclaimers: The information displayed is not guaranteed to be accurate and may contain errors and omissions. GYWC provides NO WARRANTY AS TO THE MERCHANTABILITY OR FITNESS FOR A PARTICULAR PURPOSE FOR ANY INFORMATION DISPLAYED.