

Annual Report FY 2018 July 2018 – June 2019



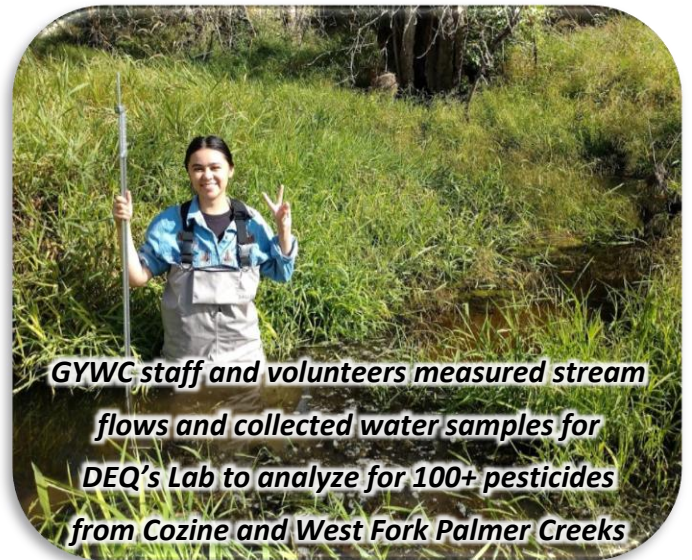
Greater Yamhill Watershed Council

Water Quality Monitoring

- Continued the GYWC's long-term **summer stream temperature and stream flow monitoring program**, started in 1995, including monitoring sites on Cozine, Mill, Palmer, and Willamina Creeks to evaluate whether these fish-bearing streams meet or exceed State water quality standards established for aquatic organisms, including local fish species such as salmon and trout.
- Continued **pesticide water quality and stream flow monitoring** in McMinnville's Cozine Creek (Urban), & Dayton's West Fork Palmer Creek (Agriculture) as part of the **Yamhill Pesticide Stewardship Partnership (PSP)**, a local initiative begun in 2007 to evaluate pesticide water quality concerns in the Yamhill River Watershed and implement community-based solutions to reduce pesticide detections in local waterways, with funding from and in coordination with the Oregon Depts. of Agriculture (ODA) and Environmental Quality (DEQ), and the Yamhill Soil & Water Conservation District (YSWCD)



In-stream continuous temperature data loggers were deployed by GYWC staff and volunteers to evaluate summertime stream temperatures in urban, agricultural, and forestry landscapes



GYWC staff and volunteers measured stream flows and collected water samples for DEQ's Lab to analyze for 100+ pesticides from Cozine and West Fork Palmer Creeks

GYWC Mission

Formed in 1995 by the Yamhill & Polk County Commissioners, and incorporated as a 501c3 non-profit in 2011, the GYWC is a stakeholder-led organization dedicated to helping the communities in the Yamhill & Chehalem Valleys to be good stewards of our lands, waters, fish & wildlife. In collaboration with more than 40+ public, private, and tribal partners, the GYWC works to provide voluntary-based solutions to protect, enhance, and monitor the quality of local natural resources, and to increase awareness of the importance of these resources for the long-term health and livability of our communities

Native Fish Monitoring

- Began implementation of a **Summer 2019 Rapid Bio Assessment (RBA) “Fish Snorkel Inventory”** of salmonid population distributions and abundances across **~160 Stream Miles** in the **North Yamhill River, Upper South Yamhill River / Agency Creek, and Willamina Creek sub-basins**. Inventory work is being conducted by fisheries contractor, Bio-Surveys LLC, with funding from and in coordination with the US Bureau of Land Management (US BLM)
- In collaboration with the BLM Salem Office, began implementation of a **Summer 2019 Pacific lamprey population distribution monitoring program** to assess presence / absence of Pacific lamprey across **lower sub-basins in the Yamhill River Watershed** using **Environmental DNA Samples (eDNA)** collected by GYWC and partner staff, and analyzed by the US Forest Service (USFS) National Genomics Center for Wildlife and Fish Conservation.
- Continued the GYWC’s long-term **Fish Spawning Survey Program** started in 2013 to **train volunteers & landowners** to **document and report observations of spawning Coho salmon and winter steelhead trout** in local waterways.



The in-progress “Fish Snorkel Inventory” will provide a detailed assessment of salmonid populations and fish habitat restoration needs & opportunities across 3 priority sub-basins focusing on cutthroat trout, ESA-listed winter steelhead trout (pictured above) and Coho salmon



Pacific lamprey presence/absence was evaluated using Environmental DNA (eDNA). Samples were collected by GYWC staff and volunteers by pumping stream water through filters which were then analyzed for eDNA by the USFS National Genomics Center

Contact the GYWC

Zach Christensen, Board Chair

zach@gywc.org

Luke Westphal, Executive Director

luke@gywc.org

(503) 474.1047 www.gywc.org

facebook.com/GreaterYamhillWC

Land
Water
& People

Empowering Local Volunteerism & Stewardship

Thanks to our dedicated community of GYWC friends and partners, this fiscal year GYWC set an **“All-Time Annual Record”** of more than **2,008+ hours of volunteer service**, with **611 community members serving across 41 local volunteer events**.

Volunteers and partners supported the GYWC’s watershed programs on-the-ground and behind-the-scenes, including **habitat restoration work parties, water quality monitoring field days, native fish surveys, and more**.

And with your support, GYWC **engaged an additional 298 community members** through **18 local outreach events**, including presentations, workshops, tours, and planning sessions.

THANK YOU VOLUNTEERS & PARTNERS!



MAKE A DIFFERENCE IN YOUR WATERSHED

Opportunities to get involved abound! Join us for projects to monitor native fish and water quality, restore local habitats, and partner with community stakeholders

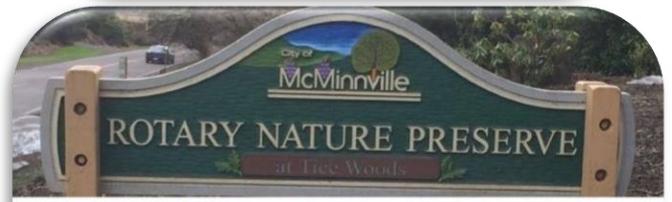
LEARN MORE TODAY www.gywc.org/volunteer

Native Habitat Restoration

- Convened the “Friends of Cozine Creek” partnership for its 2nd year of stakeholder collaborations and project development.
- + Partnership implemented “Year 2” of ongoing 4-Year habitat restoration grant projects along 0.6 miles of Cozine Creek and 12 acres floodplains and uplands, funded by ~\$48,000 in State and local grants during the previous fiscal year.
- + Secured an additional \$16,000 to fund a 4-year project on an additional 2 acres of floodplain along ~0.1 miles of Cozine Creek, with grants from Oregon Watershed Enhancement Board (OWEB), Oregon Dept. of Environmental Quality (ODEQ), and landowner matching support.
- Secured \$17,000 in grants and local cash match to fund 4-years of upland forest native habitat restoration along ~8.5 acres of the City of McMinnville’s Rotary Nature Preserve at Tice Woods Park, in partnership with McMinnville Noon Rotary Club, Cascade Steel Mill, and City Parks.



Stay connected on happenings with the Friends of Cozine Creek at www.gywc.org/cozine



Visit www.gywc.org/tice to learn how you can become involved in stewardship of Tice Woods Park



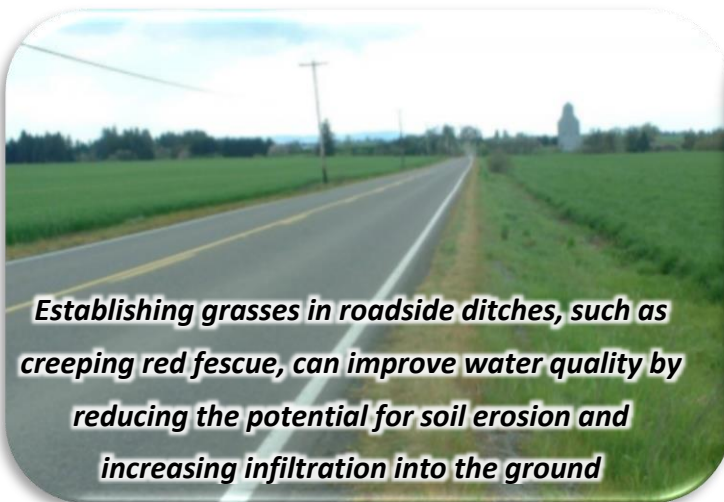
Volunteers remove invasive weeds and plant native species along Cozine Creek at Linfield College as part of an ongoing 4-year grant-funded habitat restoration project. Thanks to our volunteers from the Linfield College Environmental Studies Dept., Delta Psi Delta Fraternity, and Chemeketa Community College

Improving Water Quality & Native Habitat on Yamhill County Public Road Right-of-Ways

GYWC continues as a member of the **Yamhill County Roadside Vegetation Management Committee**, a unique local partnership formed in 2014 with Yamhill County Public Works, local conservation organizations, and community members working together to **improve water quality and native habitat** across the expansive **700-mile+ County road system**.

This fiscal year, the Committee supported implementation of “**Year 3**” of an ongoing **Assessment of Roadside Erosion & Populations of Priority Invasive Weeds and Native Plants**, led by the YSWCD’s Invasive Species Coordinator, with **grant funding from the Oregon State Weed Board (OSWB)**, **cash match from Yamhill County Public Works** and partners, and program oversight by the Committee.

The ongoing Assessment has helped prioritize and develop **roadside erosion control demonstration projects** such as grass seeding and re-grading steep slopes, identified populations of **remnant native vegetation** such as **Milkweed** varieties, and provided for **rapid response treatment of local priority “A” weeds** found during roadside surveys, including **Knotweed** varieties, **Garlic Mustard**, Italian Thistle, and Knapweed, among others.



Agricultural Pesticide Collection Event Safely Disposes 15 Tons of Unwanted, Unknown, and Banned Chemicals

In collaboration with the YSWCD, ODA, and DEQ, the GYWC coordinated a **free Agricultural Pesticide Collection Event in Fall 2018**, hosted at **Whiteson Valley Agronomics**, disposing of more than **30,000 lbs of herbicides, insecticides, fungicides, and other pesticides from 32 participants**. This is the third Agricultural Pesticide Collection event coordinated in Yamhill County by GYWC and local partners, starting in 2014. In total, these 3 local collection events have disposed of more than 118,000 lbs of pesticides from 131 participants.



Staff from Clean Harbors Inc. handle the collection, sorting, and disposal of 30,000 lbs of pesticides submitted by 32 participants at the Fall 2018 Collection Event

Promoting Erosion Control Practices for Hazelnut Orchards

In collaboration with the Yamhill Soil & Water Conservation District, the GYWC supported the implementation of a 1-year pilot project to conduct and monitor the results of cover cropping and straw mulching best management practices (BMPs) for erosion control on newly planted and mature hazelnut orchards across the Yamhill and Chehalem Valleys. This erosion control program completed 300 acres of cover cropping, and 40 acres of straw mulching, with funding provided by ODA's Pesticide Stewardship Partnership Technical Assistance grant program, and matching contributions from local partners and growers. This focus on Hazelnut erosion control practices is now being expanded into a 5-year program across Yamhill, Polk, Marion, and Washington Counties with funding from the USDA's Environmental Quality Incentives Program (EQIP), administered by local Natural Resources Conservation Service (NRCS) offices.



Typical hazelnut orchard management promotes bare ground to allow for efficient nut harvesting and reduced competition for tree growth



Cover Cropping and straw mulching can be effective practices for reducing soil erosion and improving infiltration in new and mature hazelnut orchards





Thank You to Our Partners & Funders

Board Members

Zach Christensen
Agriculture
(Chair)

Drew Chione
Fisheries
(Vice-Chair)

Jordan Anderson
*Forestry, Fisheries,
& Viticulture*
(Secretary / Treasurer)

James Riedman
Forestry & IPM

Matt Young
*City of McMinnville,
Wastewater*

Staff

Luke Westphal
Executive Director

Meg Angier
Cozine Intern
Linfield, Env. Studies

Nneka Rector
Field Intern
Chemeketa, Horticulture

Non-Profit Organizations & Associations

Newberg Chapter, Association of NW Steelheaders; Columbia Land Trust; Green Belt Land Trust; Institute for Applied Ecology; Miller Woods and Natural Connections; Cheahmill Chapter, Native Plant Society of Oregon; The Nature Conservancy; Yamhill Chapter, Oregon Small Woodlands Association; Yamhill & Polk OSU Extension Services; Spirit Mountain Community Fund; Yamhill Partners for Land & Water; Yamhill Watershed Stewardship Fund

Higher Education

Chemeketa Community College; George Fox University; Linfield College; Oregon State University; Portland Community College;

Municipalities

City of Amity; City of Carlton; City of Dayton; City of Dundee; City of Lafayette; City of McMinnville; City of Sheridan; City of Newberg; City of Willamina; City of Yamhill; McMinnville Water & Light; McMinnville Parks & Recreation

Counties

Polk County; Polk County Public Works Dept.; Yamhill County; Yamhill County Parks Dept; Yamhill County Roadside Vegetation Committee

Special Districts

McMinnville & Newberg School Districts;
Polk & Yamhill Soil and Water Conservation Districts

State Agencies

Oregon Dept of Agriculture, Oregon Dept of Environmental Quality, Oregon Dept of Forestry; Oregon Dept. of Fish & Wildlife, Oregon Watershed Enhancement Board

Tribal Governments

Confederated Tribes of Grand Ronde &
Confederated Tribes of Warm Springs

US Federal Agencies

Polk & Yamhill Farm Service Agency; Polk & Yamhill Natural Resources Conservation Services; Salem & Tillamook Offices of US Bureau of Land Management; US Fish & Wildlife Service

Monthly Meetings

1st Tuesday of the Month
6:30pm Social & Food
7pm-8pm Meeting

McMinnville Public Library,
Carnegie Room
225 NE Adams St

www.gywc.org/meetings

JOIN US FOR 1st TUESDAY MONTHLY MEETINGS



CONNECT with others who are passionate about
local natural resources conservation

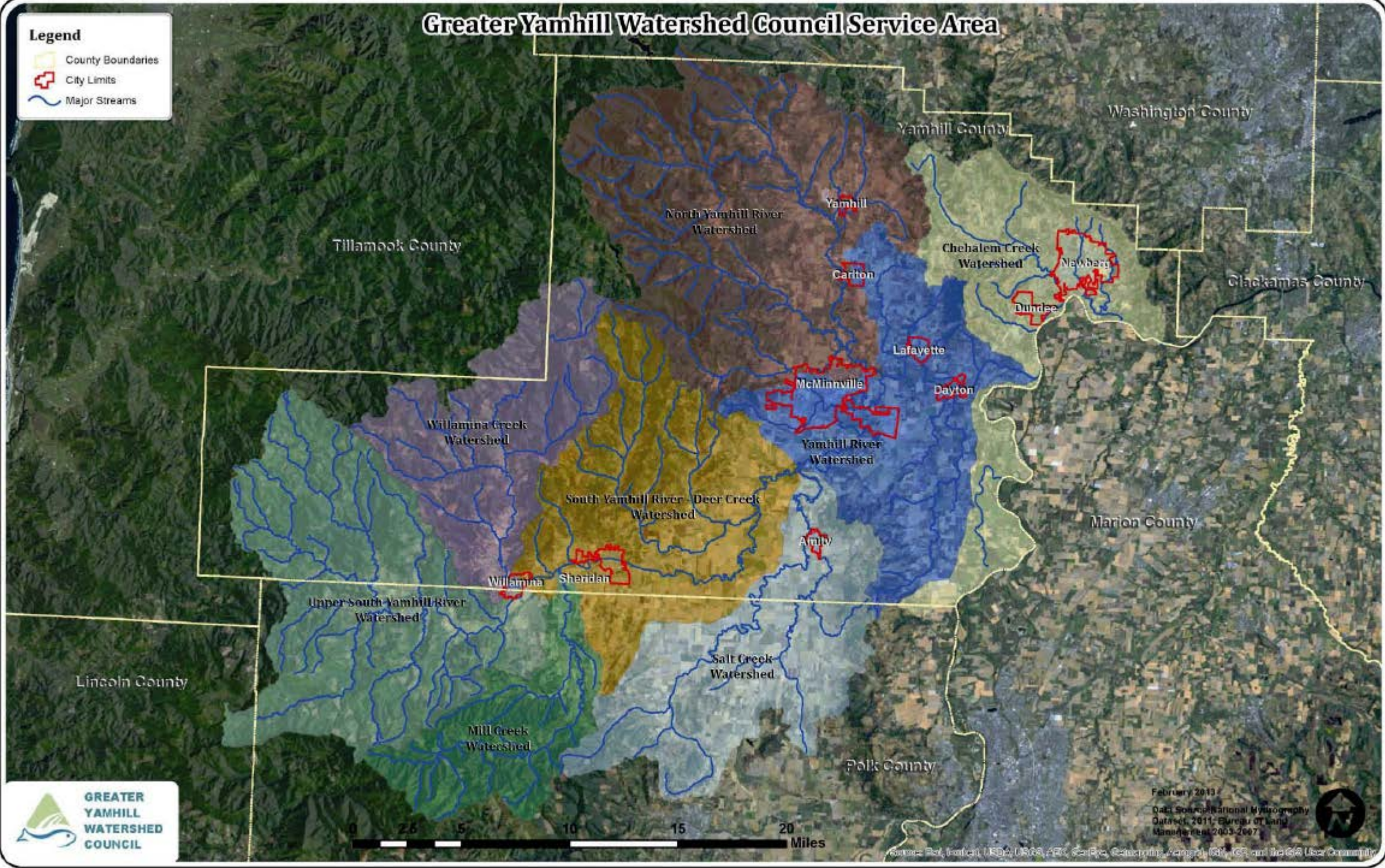
LEARN about what's going on in your watershed

SHARE your voice, skills, and time to make a
difference in your local community

Greater Yamhill Watershed Council Service Area

Legend

-  County Boundaries
-  City Limits
-  Major Streams



February 2013
Data Source: National Hydrography
Data set, 2011; Bureau of Land
Management 2003-2007

Source: Polk, Lincoln, USA; USGS, ARS, Scripps, Center for Environmental and Estuarine Science, and the GIS User Community