

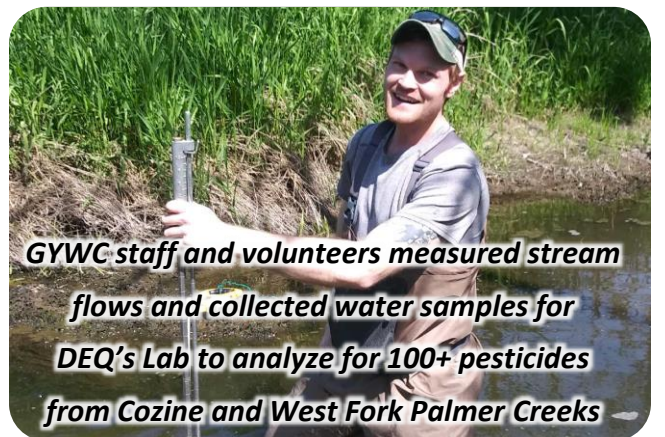
Annual Report FY 2019 July 2019 – June 2020



Greater Yamhill Watershed Council

Water Quality Monitoring

- Continued the GYWC's long-term **summer stream temperature and stream flow monitoring program**, started in 1995, including monitoring sites on Cozine, Mill, Palmer, and Willamina Creeks to evaluate whether these fish-bearing streams meet or exceed State water quality standards established for aquatic organisms, including local fish species such as salmon and trout.
- Continued **pesticide water quality and stream flow monitoring** in McMinnville's Cozine Creek (Urban), & Dayton's West Fork Palmer Creek (Agriculture) as part of the **Yamhill Pesticide Stewardship Partnership (PSP)**, a local initiative begun in 2007 to evaluate pesticide water quality concerns in the Yamhill River Watershed and implement community-based solutions to reduce pesticide detections in local waterways



** Note: The FY 2019 report includes photos that pre-date 2020 COVID-19 mandates for public health and safety, including social distancing and facial coverings. As COVID-19 protocols were issued, health and safety measures were implemented in accordance with state rules & guidance.*

GYWC Mission

Formed in 1995 by the Yamhill & Polk County Commissioners, and incorporated as a 501c3 non-profit in 2011, the GYWC is a stakeholder-led organization dedicated to helping the communities in the Yamhill & Chehalem Valleys to be good stewards of our lands, waters, fish & wildlife. In collaboration with more than 40+ public, private, and tribal partners, the GYWC works to provide voluntary-based solutions to protect, enhance, and monitor the quality of local natural resources, and to increase awareness of the importance of these resources for the long-term health and livability of our communities

Native Fish Habitat

- Completed a contracted **Summer 2019 Rapid Bio Assessment (RBA) “Fish Snorkel Inventory”** of salmonid population distributions and abundances across **~137 Stream Miles** in the **North Yamhill, Upper South Yamhill, and Willamina Creek sub-basins**.

Additional fish surveys will be contracted in **Summer 2020** for **~30+ miles** in the **Upper South Yamhill and Mill Creek sub-basins**, including Final a Report and Presentation in 2021.

- Completed a **Summer 2019 Pacific lamprey population distribution Environmental DNA Sample (eDNA) monitoring program** to assess presence / absence of Pacific lamprey across **lower sub-basins in the Yamhill River Watershed**. A \$4,000 Spirit Mountain Community Fund grant has been secured to **expand sampling in Summer 2020**
- Continued the GYWC’s long-term **Fish Spawning Survey Program** started in 2013 to **train volunteers & landowners** to **report observations of spawning Coho salmon and winter steelhead trout**. GYWC steelhead data was included in recent **updates to Oregon Essential Salmonid Habitat (ESH)** designations in two local sub-basins.

2019

NORTH YAMHILL & WILLAMINA
RAPID BIOASSESSMENT
INVENTORY FOR SALMONIDS



Bio-Surveys, LLC

The in-progress “Fish Snorkel Inventory” will provide a detailed assessment of salmonid populations and fish habitat restoration needs & opportunities across 4 priority sub-basins focusing on native cutthroat trout and winter steelhead trout and naturalized Coho salmon



Pacific lamprey presence/absence was evaluated using Environmental DNA (eDNA) samples collected by GYWC staff and volunteers by pumping stream water through filters which were then analyzed for Pacific lamprey DNA by the genetics laboratory at the US Forest Service’s Rocky Mountain Research Station in Missoula, Montana.

Contact the GYWC

Zach Christensen, Board Chair

zach@gywc.org

Luke Westphal, Executive Director








luke@gywc.org

(503) 474.1047 www.gywc.org

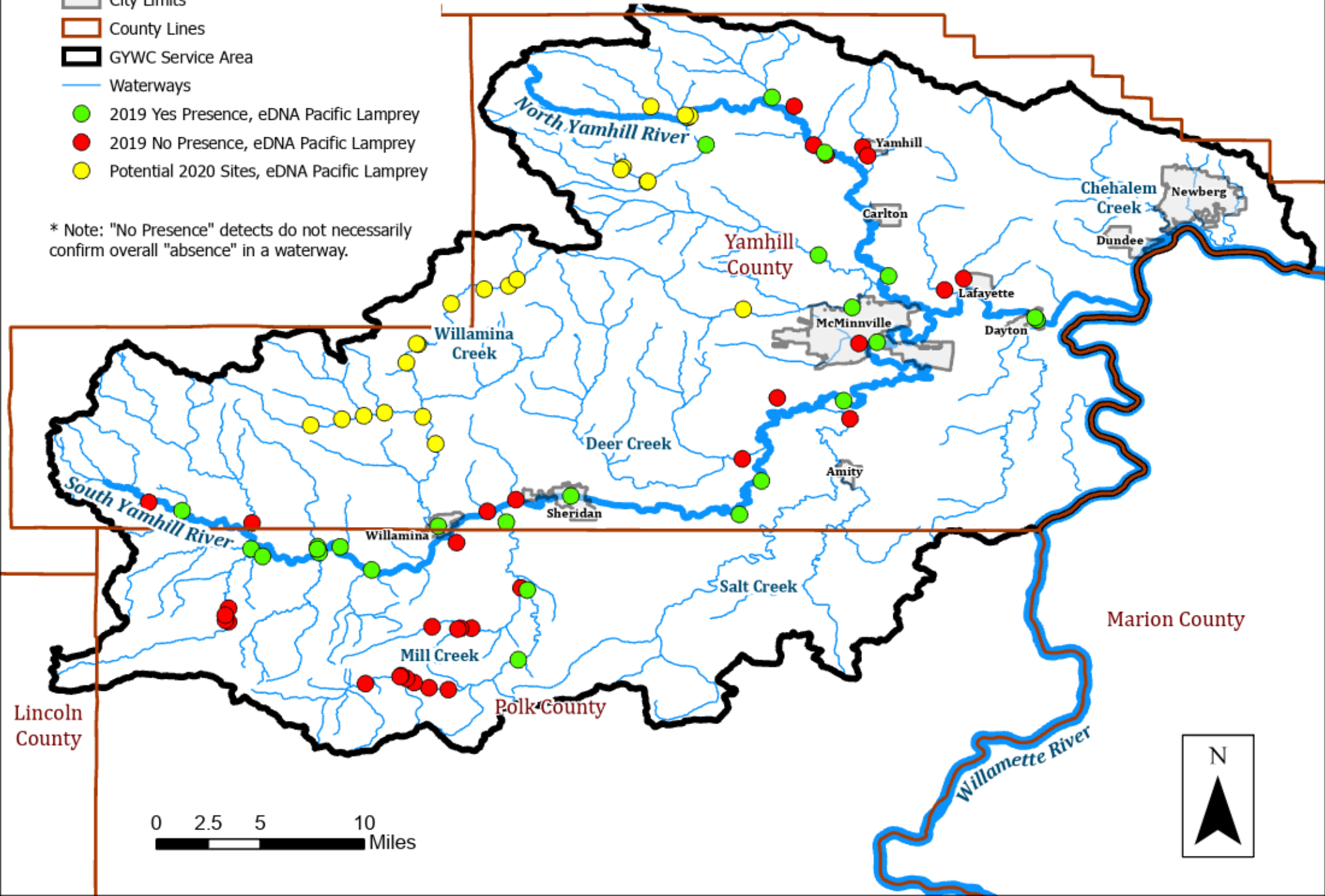
facebook.com/GreaterYamhillWC

Land
Water
& People

Pacific Lamprey, Greater Yamhill Watershed 2019 eDNA Sampling Results, Presence

-  City Limits
-  County Lines
-  GYWC Service Area
-  Waterways
-  2019 Yes Presence, eDNA Pacific Lamprey
-  2019 No Presence, eDNA Pacific Lamprey
-  Potential 2020 Sites, eDNA Pacific Lamprey

* Note: "No Presence" detects do not necessarily confirm overall "absence" in a waterway.



0 2.5 5 10 Miles



Empowering Local Volunteerism & Stewardship

Working on-the-ground and behind-the-scenes, our community members lead the charge to make GYWC watershed programs a big success, including **habitat restoration work, stream water quality monitoring, fish habitat surveys, planning meetings, and much more.**

Despite challenges and event cancellations amid the ongoing COVID-19 pandemic, this fiscal year GYWC yet again set a **“NEW All-Time Record” of 2,150 service hours!**

This includes **348 community members** serving across **36 local volunteer events**, as well as **19 student interns who contributed 900+ hours of service -- nearly half of our yearly total!**

GYWC also engaged an additional **483 community members** across **30 local outreach events**, including presentations, workshops, tours, planning sessions, and online tele-events.

THANK YOU to our VOLUNTEERS!



MAKE A DIFFERENCE IN YOUR WATERSHED

Opportunities to get involved abound! Join us for projects to monitor native fish and water quality, restore local habitats, and partner with community stakeholders

LEARN MORE TODAY www.gywc.org/volunteer

Native Habitat Restoration

- Convened the “Friends of Cozine Creek” partnership for its 3rd year of stakeholder collaborations and project development.
- + Completed **Year 2 Site-Prep Weed Control and Native Plantings** on ~22 acres of urban riparian habitat, along ~0.9 stream miles of Cozine Creek. And transitioned these acres to the post-planting maintenance phase.
- + Began **Year 1 Site-Prep Weed Control** of an **additional ~20 acres** of urban riparian habitat, along ~0.8 stream miles of **Cozine Creek** near SW edge of McMinnville City Limits within the Garlic Mustard infestation treatment area.
- Completed **Year 2 Site-Prep Weed Control** on ~8.5 acres upland forest habitat in the **Rotary Nature Preserve at Tice Woods**.
- **Secured ~\$22,000+ in State Grant** funding for ~4.5 acres oak savannah habitat restoration, including 3 acres at the **Yamhill SWCD’s Miller Woods Property**.

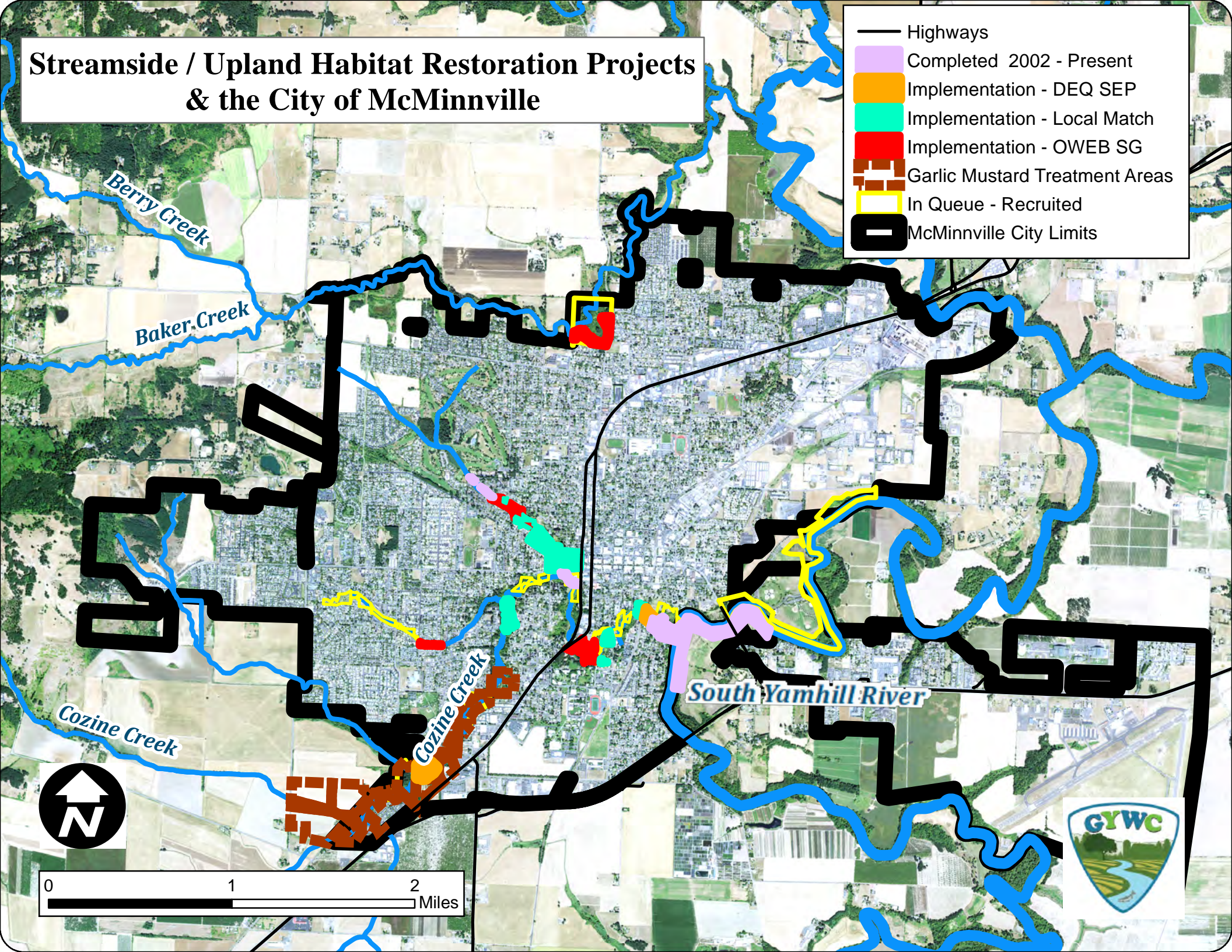


Stay connected on happenings for Friends of Cozine Creek at www.gywc.org/cozine



Streamside / Upland Habitat Restoration Projects & the City of McMinnville

- Highways
- Completed 2022 - Present
- Implementation - DEQ SEP
- Implementation - Local Match
- Implementation - OWEB SG
- Garlic Mustard Treatment Areas
- In Queue - Recruited
- McMinnville City Limits



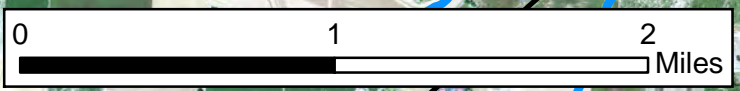
Berry Creek

Baker Creek

Cozine Creek

Cozine Creek

South Yamhill River



Yamhill County Public Road Right-of-Way (ROW) Partnerships to Improve Water Quality & Native Habitat

GYWC serves as a member of the **Yamhill County Roadside Vegetation Management Committee**, an innovative partnership formed in 2014 with Yamhill County Public Works, local conservation organizations, and engaged community members working together to **improve water quality and habitat** across the **700-mile+ Yamhill County road system**.

For the 2020 Field Season, the Committee supported implementation of “**Year 4**” of an ongoing **Assessment of Yamhill County Roadsides to inventory erosion, invasive weeds, and native plants**. This Project is supported through **funding from Yamhill County Public Works** and local partners, and **grants from the Oregon State Weed Board (OSWB)**.

By the end of the 2020 Field Season, all Yamhill County roads will have been surveyed at least once. The Committee **uses the Assessment data to prioritize actions on the ground**, including: **Treatment of target invasive weeds** such as Italian Thistle, Knotweed spp., and Garlic Mustard; **Protection and enhancement of remnant native vegetation** including uncommon wildflowers such as Milkweed spp and Kincaid’s Lupine; **Roadside Habitat Demonstration Projects** to control erosion and improve pollinator habitat; and **Engagement and Coordination with ROW-adjacent landownership**



Italian Thistle (Carduus pycnocephalus)

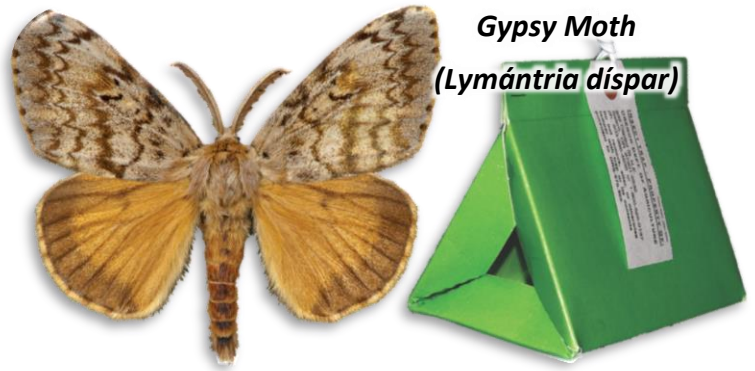
Italian Thistle identified in the Yamhill County Roadside Assessment is a top priority invasive weed for Early Detection Rapid Response (EDRR). Treatments have included spot spray, hand pull, burning, and mowing. Engagement with private landowners is imperative as this weed can quickly spread within the Public Road Right of Way, and to / from adjacent Private Properties, such as Vineyards and Pastures.

Student Interns Deploy Invasive Insect Monitoring Traps

In support of the **Oregon Dept. of Agriculture's (ODA) Insect Pest Prevention and Management Program (IPPM)**, starting in June 2020, GYWC student volunteer interns from **Yamhill-Carlton High School and Linfield University** led an effort to **deploy more than 200+ invasive insect monitoring traps** across sites in the Yamhill and Chehalem Valleys to document presence of **agricultural pest populations** including: **Light-Brown Apple Moth, Japanese Beetle, and Gypsy Moth** (European and Asian varieties).

During Summer 2020, the students will also **perform regular maintenance and monitoring checks** on the traps and **retrieve the traps for processing** by ODA IPPM staff.

The **student's efforts made a significant impact for the local success of the ODA IPPM program**, which had been left **short-staffed due to the COVID-19 pandemic**. This unique **internship provided students with opportunities to gain valuable skills and experiences** including ODA IPPM trap methodology, use of ESRI ArcGIS mapping software and Mobile App, working independently in field settings, and exposure to a diversity of local landscapes.





**Greater
Yamhill
Watershed
Council**

Thank You to Our Partners & Funders

Board Members

Zach Christensen
Agriculture
(Chair)

Drew Chione
Fisheries
(Vice-Chair)

Matt Young
*City of McMinnville,
Wastewater*
(Secretary)

Jordan Anderson
*Forestry, Fisheries,
& Viticulture*
(Treasurer)

James Riedman
Forestry & IPM

Mahima White
Fisheries

Staff

Luke Westphal
Executive Director

Non-Profit Organizations & Associations

Newberg Chapter, Association of NW Steelheaders; Columbia Land Trust; Green Belt Land Trust; Institute for Applied Ecology; Miller Woods and Natural Connections; Cheahmill Chapter, Native Plant Society of Oregon; The Nature Conservancy; Yamhill Chapter, Oregon Small Woodlands Association; Yamhill & Polk OSU Extension Services; Spirit Mountain Community Fund; Yamhill Partners for Land & Water; Yamhill Watershed Stewardship Fund

Higher Education

Chemeketa Community College; George Fox University; Linfield College; Oregon State University; Portland Community College;

Municipalities

City of Amity; City of Carlton; City of Dayton; City of Dundee; City of Lafayette; City of McMinnville; City of Sheridan; City of Newberg; City of Willamina; City of Yamhill; McMinnville Water & Light; McMinnville Parks & Recreation

Counties

Polk County; Polk County Public Works Dept.; Yamhill County; Yamhill County Parks Dept; Yamhill County Roadside Vegetation Committee

Special Districts

McMinnville & Newberg School Districts;
Polk & Yamhill Soil and Water Conservation Districts

State Agencies

Oregon Dept of Agriculture, Oregon Dept of Environmental Quality, Oregon Dept of Forestry; Oregon Dept. of Fish & Wildlife, Oregon State Weed Board, Oregon Watershed Enhancement Board

Tribal Governments

Confederated Tribes of Grand Ronde &
Confederated Tribes of Warm Springs

US Federal Agencies

Polk & Yamhill Farm Service Agency; Polk & Yamhill Natural Resources Conservation Services; Salem & Tillamook Offices of US Bureau of Land Management; US Fish & Wildlife Service

Monthly Meetings

1st Tuesday of the Month
6:30pm Social & Food
7pm-8pm Meeting

McMinnville Public Library,
Carnegie Room
225 NE Adams St

www.gywc.org/meetings

JOIN US FOR 1st TUESDAY MONTHLY MEETINGS

CONNECT with others who are passionate about
local natural resources conservation

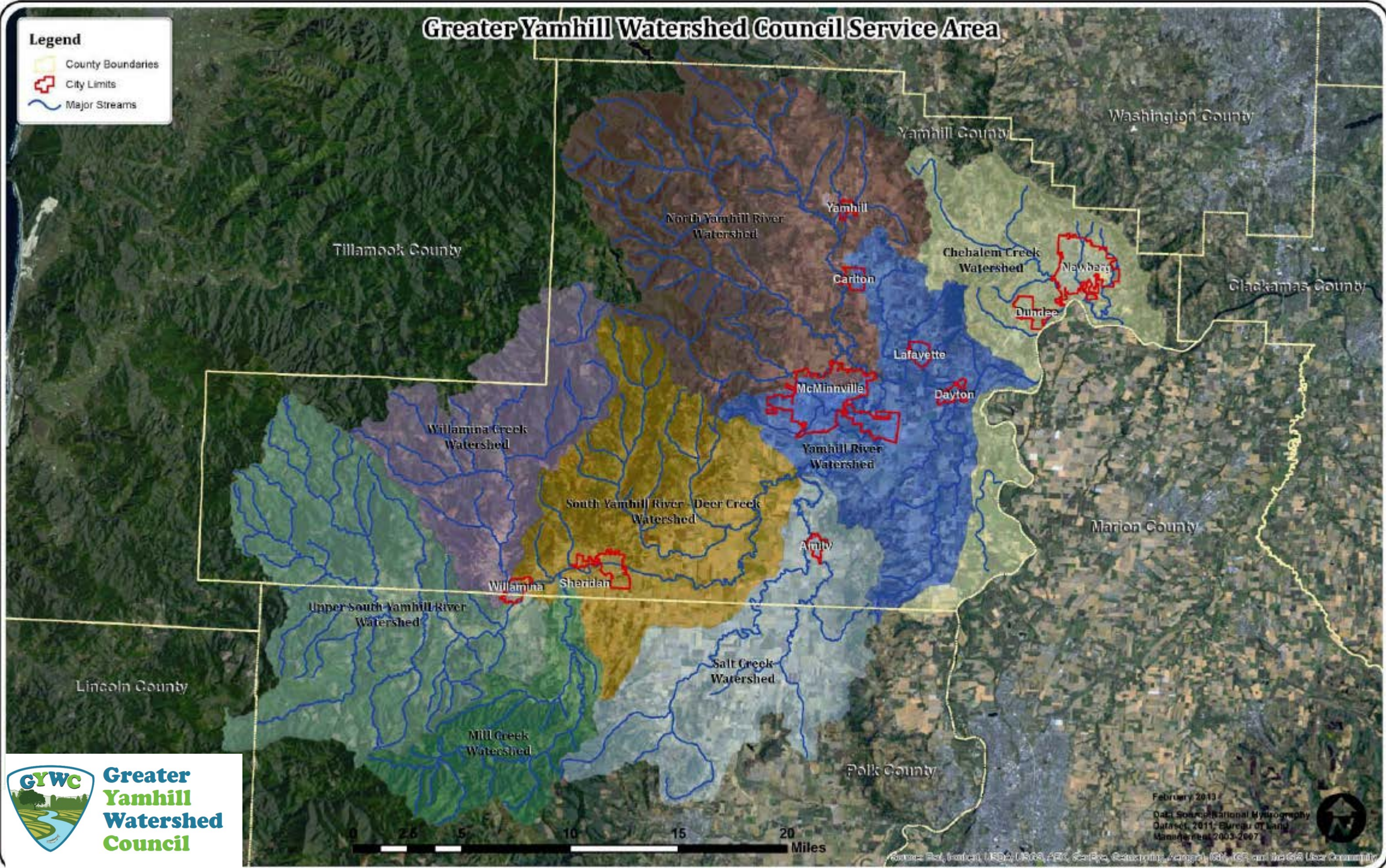
LEARN about what's going on in your watershed

SHARE your voice, skills, and time to make a
difference in your local community

Greater Yamhill Watershed Council Service Area

Legend

- County Boundaries
- City Limits
- Major Streams



**Greater
Yamhill
Watershed
Council**

February 2013

Data Source: National Hydrography
Data set, 2011; Bureau of Land
Management 2003-2007

Source: Polk, Lincoln, USA; USGS, AEC, Scripps, Center for Environmental and Estuarine Science, and the GIS User Community